

**CITYGATE**  
**AT SERPONG CBD**

SUMMARECON SERPONG



EMBRACE **THE FUTURE**  
AT **SUMMARECON**  
**SERPONG**

Encompassing nearly 1,000 hectares within an expansive 8,000-hectare integrated urban district developed by multiple leading property groups, Summarecon Serpong seamlessly integrates comfort, connectivity, and sophistication in one dynamic destination. With forward-looking developments continually taking shape, it has evolved into a vibrant city in motion where progress, opportunity, and life converge to shape a future of exceptional value.

CITY GATE at Serpong CBD emerges as the newest icon within Summarecon Serpong, the flagship township development by Summarecon Agung, an award-winning property developer in Indonesia with over two decades of innovation and excellence.

The Future  
**REVEAL***ed*





**THE HOOD**

**ACCESS TO BSD**

**TERAS LAKON**

**SONOBEBE**

**KAMPUNG KECIL**

**SHELL**

**SUPERMARKET & RESTAURANT**

**CITY GATE  
AT SERPONG CBD**

**FUTURE OFFICE DEVELOPMENT**

**ACCESS TO BSD**

# SEAMLESSLY CONNECTED

To The Future

CITY GATE at Serpong CBD spans 40 hectares, positioned in a rapidly evolving urban corridor. It's connected to The Hood, a lifestyle destination with a lake, promenade, and entertainment facilities.

This integration makes CITY GATE a hub for business, energy, and growth. With easy access to new Serpong CBD and surrounding areas, it supports unstoppable business growth



# THE GATEWAY TO THE HOOD

CITY GATE at Serpong CBD, spanning 40 hectares, is Connected to The Hood, Serpong's lifestyle destination with a lake, promenade, and entertainment options. The Hood features a Vibrant Promenade, an Amphitheater, Concert Hall, Cinema, and a curated selection of cafés and restaurants. This integration puts Business at the Center of new energy and growth.



# A BOLD ARRIVAL

A LANDMARK OF DISTINCTION

CITY GATE's design embodies strength and refinement, crafting a **Legacy of Excellence** with grand arrival sequences and vibrant **Public Spaces** that elevate brand stature and deliver lasting impact



Where Business  
Potential **UNFOLDS**

CITY GATE is more than a commercial center, it's a vision for business growth. **Strategically Located at the Entry of the new Serpong CBD**, it sets the stage for massive foot traffic and business opportunities.

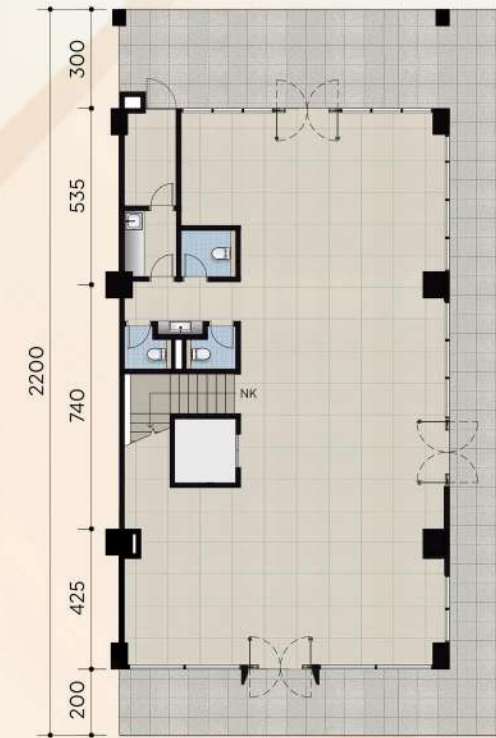
With seamless connectivity and excellent urban design, CITY GATE creates harmony between commerce, capital, and innovation. As a **Gateway to Future Expansion**, it offers businesses presence and prominence, empowering them to grow with confidence

# CITY GATE OFFICE SUITE - CN2

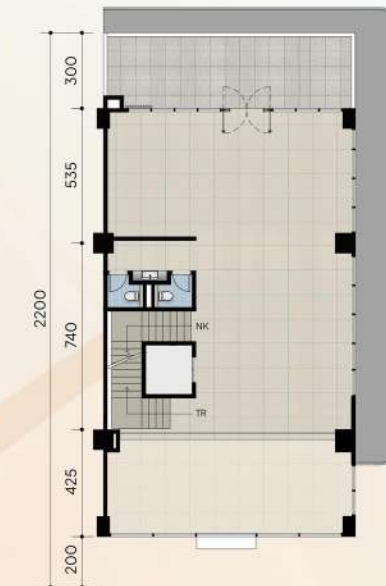
12 x 22 (HOEK)

LAND AREA  
**264** SQM

BUILDING AREA  
**1337** SQM



Ground Floor



Mezzanine Floor



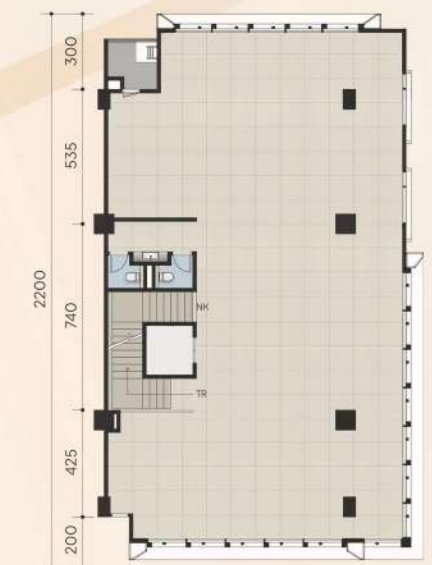
1st Floor



2nd Floor



3rd Floor



5th Floor

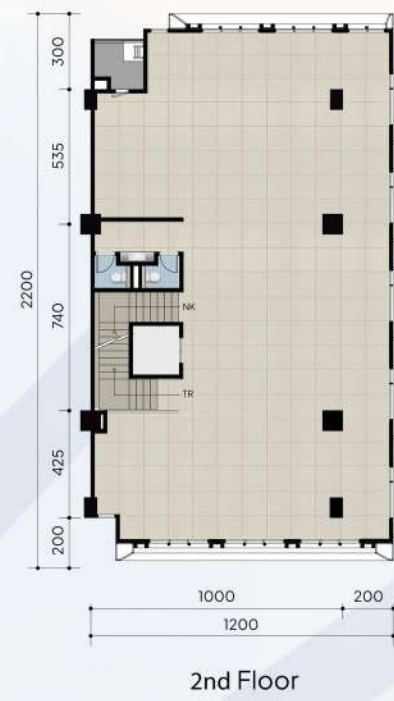
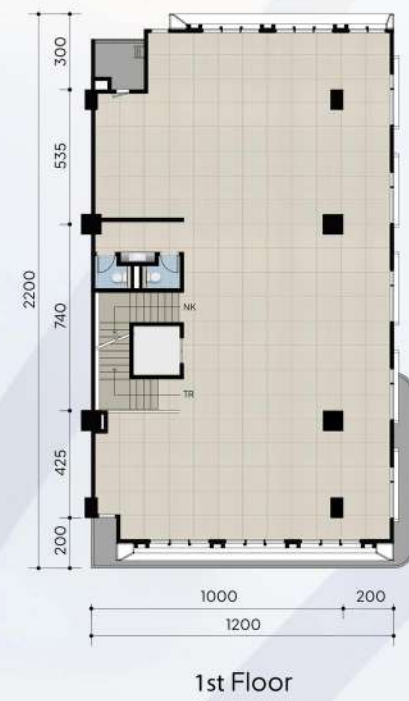
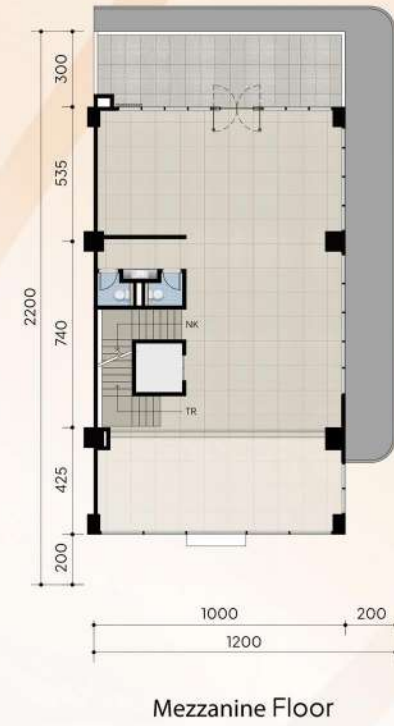
DISCLAIMER : FOR QUALITY IMPROVEMENT, SPECIFICATIONS AND DESIGN ARE SUBJECT TO CHANGE WITHOUT PRIOR NOTICE AND AREA AT THE FULL DISCRETION OF DEVELOPER. ILLUSTRATION SHOWN ARE FOR EXAMPLE PURPOSE ONLY AND ARE NOT PART OF THE BUYING AND SELLING AGREEMENT.

# CITY GATE OFFICE SUITE - CN1

12 x 22 (HOEK)

LAND AREA  
**264** SQM

BUILDING AREA  
**1098** SQM

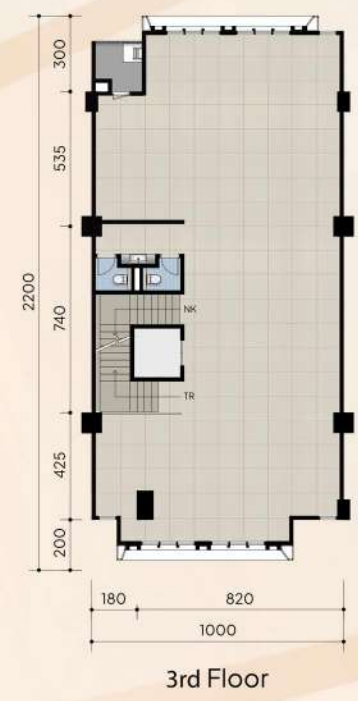
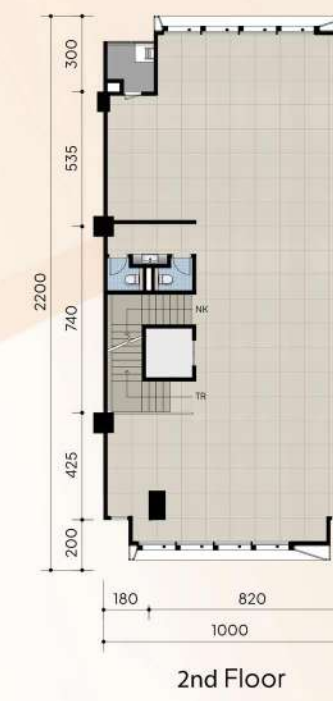


# CITY GATE OFFICE SUITE - PRM

10 x 22

LAND AREA  
**220** SQM

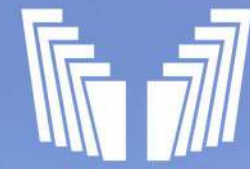
BUILDING AREA  
**945** SQM





OUTDOOR MEZZANINE  
CITY GATE OFFICE SUITE





# CITY GATE

AT SERPONG CBD

CITY GATE OFFICE SUITE

# CITY GATE GRAHA - CN

8,5 x 18 (HOEK)

LAND AREA  
**153** SQM

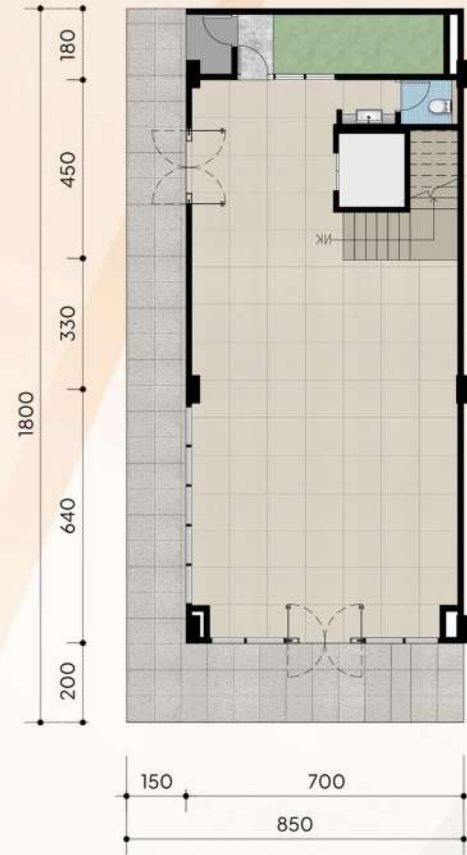
BUILDING AREA  
**603** SQM

# CITY GATE GRAHA - PRM

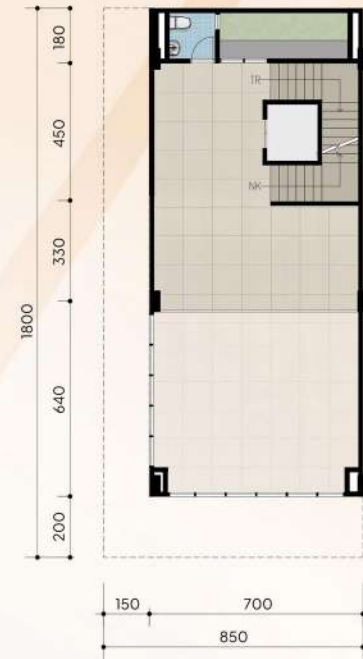
6 x 18

LAND AREA  
**108** SQM

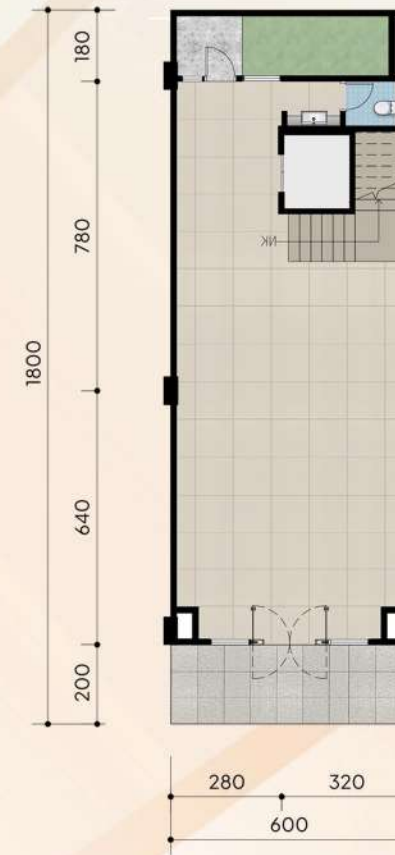
BUILDING AREA  
**453** SQM



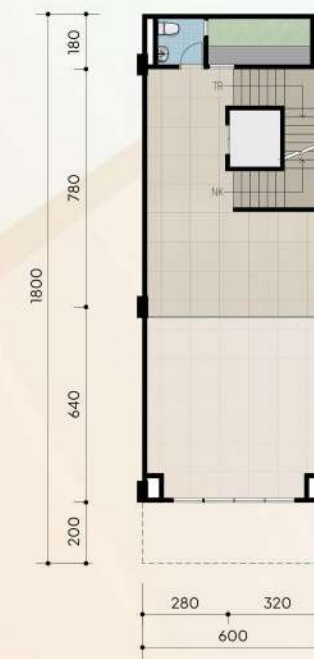
Ground Floor



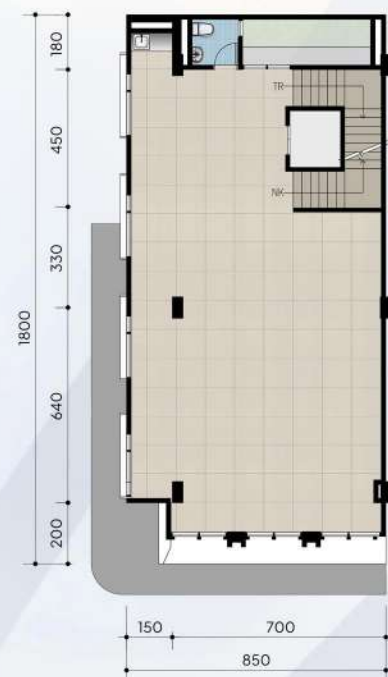
Mezzanine Floor



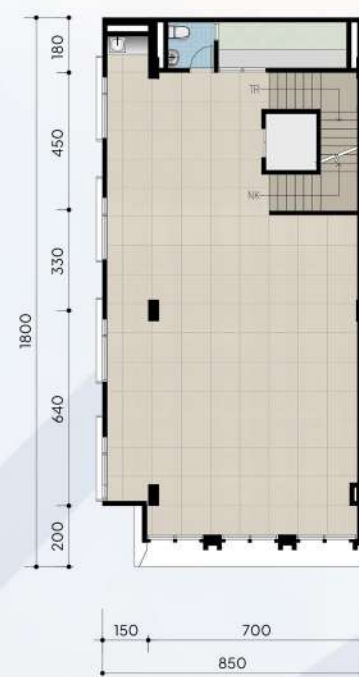
Ground Floor



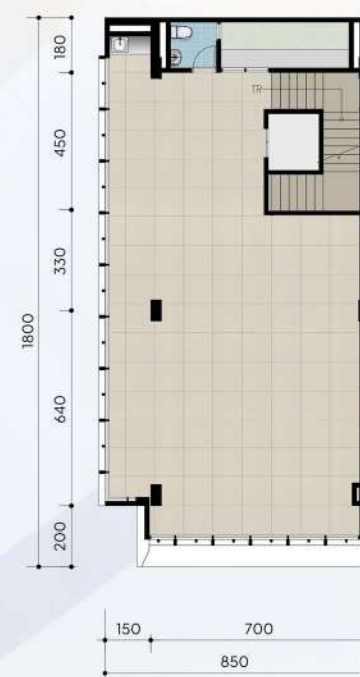
Mezzanine Floor



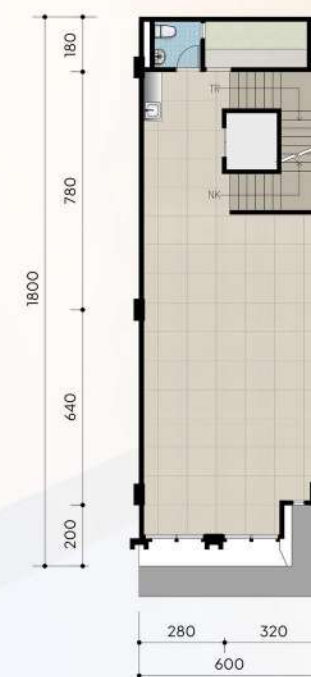
1st Floor



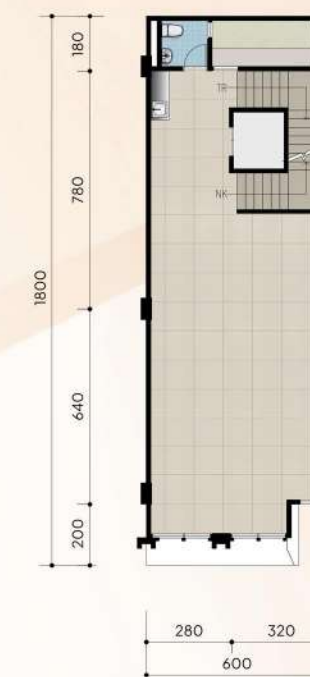
2nd Floor



3rd Floor



1st Floor



2nd Floor



3rd Floor



CITY GATE GRAHA

# SPECIFICATION

		CITY GATE OFFICE SUITE	CITY GATE GRAHA
<b>Foundation</b>		Pile	Pile
<b>Main Structure</b>		Reinforced Concrete	Reinforced Concrete
<b>Interior Wall Finishes</b>		Plaster and Paint	Plaster and Paint
<b>Ceiling</b>		Gypsum Board in Paint Finish	Gypsum Board in Paint Finish
<b>Roof</b>		Corrugated Zinalume / Metal Roof with insulation, Concrete Deck	Corrugated Zinalume / Metal Roof with insulation, Concrete Deck
<b>Main Door</b>		Aluminium, Tempered Glass Door	Aluminium, Tempered Glass Door
<b>Facade</b>	Exterior	Aluminium Composite Panel with Low E Glass	Aluminium Composite Panel
	Wall Finishes	Plaster and Paint	Plaster and Paint
<b>Floor</b>	Typical Floor	Homogeneous Tile	Homogeneous Tile
<b>Toilet</b>	Wall Finishes	Homogeneous Tile	Homogeneous Tile
	Floor Finishes	Non-slip Homogeneous Tile	Non-slip Homogeneous Tile
	Sanitary	TOTO or equivalent	TOTO or equivalent
<b>Service Toilet/Janitor</b>		Ceramic Tile	-
<b>Electricity</b>		23000 VA	13200 VA
<b>Lift</b>		Included	Optional



**summarecon**  
better city,  
brighter future **serpong**

[www.summareconserpong.com](http://www.summareconserpong.com)

**MARKETING GALLERY**

Plaza Summarecon Serpong  
Jl. Boulevard Gading Serpong  
Blok M5 No. 3, Tangerang 15810